



# Kindergarten



# 2024 Handbook

Welcome to  
Kindergarten!

## Welcome to Kindergarten

The Kindergarten year is an important one for all concerned. It is the first experience your child has of school life and a time for your child to develop and reinforce their own identity, learn important early numeracy, literacy and social skills that will help them through school. It is often your child's first contact in a social setting without parental support and we will strive to make this a positive experience for you and your child.

## Philosophy

Our commitment as Early Childhood educators is to create a learning environment in which each child can thrive and become an independent, creative and connected learner. We believe in engaging children in learning experiences that foster their independence, creativity and the connectedness needed in today's world and our global future. We recognise the individuality and varied abilities of our students and provide every opportunity for them to find their passion, take risks, strive to improve, succeed and learn from any setbacks. We will focus on the experiences of the 'whole' child with a large emphasis placed on literacy and numeracy, developed through explicit teaching, balanced with a student-centred, hands-on and playful approach. This approach enabling your child the opportunity to prepare for their future years of learning.

## 2024 Term Dates

<b>Term 1</b>	Wednesday 31 <sup>st</sup> January – Thursday 28 <sup>th</sup> March
<b>Term 2</b>	Monday 15 <sup>th</sup> April – Friday 28 <sup>th</sup> June
<b>Term 3</b>	Monday 15 <sup>th</sup> July – Friday 20 <sup>th</sup> September
<b>Term 4</b>	Monday 7 <sup>th</sup> October – Thursday 12 <sup>th</sup> December

## 2024 School Development Days

<b>Term 2</b>	Friday 31 <sup>st</sup> May 2024
<b>Term 3</b>	Monday 19 <sup>th</sup> August 2024
<b>Term 4</b>	Friday 22 <sup>nd</sup> November 2024

## Kindergarten Voluntary Contributions

Parents are asked to contribute towards school finances for additional resources to enhance teaching programs and to purchase sports equipment, library materials, teaching aids and other educational requirements. These contributions can be paid to the Office, via Campion Education Supplies (booklist providers), Qkr or Bank Deposit.

**Kindergarten Contributions: \$60.00 per year**

## Kindergarten Session Times

Kindergarten children will attend 8.35am-2.45pm. Doors open at 8.25am

<b>Group A, C &amp; E:</b>	Monday and Wednesday every week and Friday on even weeks
<b>Group B, D &amp; F:</b>	Tuesday and Thursday every week and Friday on odd weeks

Settling the children is our first priority during the first few weeks. Please do not stay for too long in the early days. We find the longer a parent lingers, the longer it takes for the child to settle. There are many activities to distract an upset child, so please trust us, we want your child to be happy and settled as quickly as possible with minimal distress to both parent and child. If your child is unsettled or distressed, we will contact you.

## Kindergarten Program

The focus of the Kindergarten program is your child. Your child is important and is central to what is being planned. The program is flexible and based on a thematic approach driven by the interests and needs of your child.

The program aims to provide a wide variety of play experiences so that your child can explore, investigate, create, socialise, communicate and think in an active and challenging, but secure and nurturing environment. Therefore, it is the process of learning and not the end product that carries the importance.

Early childhood education gives your child the opportunity to transition from the familiar home environment and develops self reliance in the Kindergarten setting. Therefore, family involvement in the Kindergarten is encouraged as it provides continuity for the child's learning and social development. We encourage all parents to join in for the first 10 minutes of the day. This helps your child settle into the school routine as well as see your child's work and talk about what they have been doing at Kindergarten.

During Term 1 our focus will be on rules and routines, teaching children how to learn, getting to know the children (All About Me) and colours and shapes.

## Class Placement

At the commencement of Term 1 your child will be placed into a class with a teacher. This is the first opportunity for each of the teachers to see the children working together as a group. Some students do require additional support and therefore it is necessary that we consider the placement of all children.

**It is possible that during the first two weeks of Kindergarten that your child may move classes. Your Kindergarten days will not change.**

## Reporting to Parents

Every child will be provided with a portfolio at the end of the year and a formal report is sent home at the end of each semester. A two-way conference (teacher-parent) will be arranged at the end of Term One to discuss your child's progress.

## What to Bring

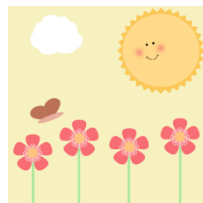
We ask all parents to provide the items listed on the Kindergarten Booklist. There is no need to label all the items with your child's name as we will be sharing the equipment through the year.

## Connect

Connect is a secure online environment developed by the Department of Education for staff, students and parents in public schools. In Kindergarten all three Kindergarten classes (EC1-EC3) use the same Connect Kindergarten page. This is used as a communication tool to communicate with all Kindergarten parents. It is important that you read all the notifications from *all* the Kindergarten teachers when they are published.



Our school uses Connect to keep parents and carers updated with important information. Things like up-coming events, newsletter, excursions, classroom activities, photos and stories can be sent to you via email or, if you prefer, via a push notification on your phone. We will be implementing all of the aspects of Connect overtime. Parents will receive a “P” number and password via email. It is important that you login to the website first and download Connect Now from the [Apple App Store](#) or [Google Play](#).



## Parent Roster

Roster duty is voluntary; however, we encourage all parents to attend at least once during each semester. Taking time to participate in parent duty allows your child to see that you value their education and learning. Parents are asked to attend for half a day from 8.35am to 10.15am. You will be involved in simple activities, assisting with morning activities and cleaning and packing away of materials. If you have selected a day you are unable to attend, please let us know on or before the day. Fill in your name on the roster sheet on the day that suits you. All parent/ family helpers **MUST** sign in at the administration office. **NO ROSTER IS AVAILABLE IN TERM 1.**

## Noticeboards and Newsletters

Please check the noticeboard regularly as notes will advise you of upcoming events and news. A Kindy newsletter is handed out at the beginning of every school term.

## Collection and Delivery of Children

Doors will open at 8.25am and you are welcome to enjoy the classroom with your child. At 8.35am we will say good-bye and begin our day at Kindy together. If you are running late and expect to enter the classroom after 8.35am you will be required to obtain a late note from the office. Kindy finishes at 2.45pm. At the end of each day, please wait outside the classroom until your child is called and sent to you. This is so staff can make sure each child goes to the correct person collecting them. If someone else is to pick up your child, it is essential that you notify staff verbally. If you have a permanent arrangement with someone please write a covering letter including your signature plus that of the person picking up your child. Early collections and late drop offs must sign in and out of the administration office.

## Clothing

Wellard Primary School requires all children to follow the dress code, which is the Wellard Primary School Polo shirt, school hat and plain black bottoms. These can be black shorts, pants or skorts. Clothing worn by your child needs to be comfortable and easy for them to put on and take off when they need to go to the toilet. Aprons/shirts will be used, but accidents happen! Please bring and keep a set of spare (named) clothing in your child's bag **at all times** in case of any accidents whether it be toileting or play! Uniforms can be ordered through Uniform Concepts at any time throughout the year. \*\* Tip – to order a jacket at the beginning of Term 1, for the unexpected cold summer days. \*\*



## Hats & Sunscreen

The school uniform consists of a wide brimmed hat which provides a high level of sun protection. These can be purchased from Uniform Concepts. These hats must remain at Kindy all year and must be clearly labelled with your child's name. They are sent home at the end of each term for washing. Hats are essential all year for outside play. Please apply sunscreen to your child before arriving to Kindy daily.



## Fruit and water bottles

Each child is required to bring in a fruit or vegetable snack daily, in a small labelled container. This is to be placed on the trolley in the mornings outside the classroom.



Please bring a labelled water bottle daily filled with water only for your child to access throughout the day. This is to be placed on the trolley outside the classroom at the beginning of the day. **No glassware please!**

## Footwear

During warm weather children are encouraged to wear sandals. In the colder months it is appreciated if children could wear sneakers/runners of the correct size, with velcro. Please **do not** send your child in slippers, plastic gumboots or thongs unless they bring another pair of shoes to change into. They are not suitable for wearing while skipping, running, hopping or climbing on equipment in the playground.

## Celebration of student birthdays

**Please do not bring in cakes/cupcakes/lolly bags.** We have an ever increasing number of students with allergies, and as a school we need to guarantee their safety, health and wellbeing. Also, our Healthy, Food and Drinks Policy requires us to provide children with healthy food at every opportunity. Consequently, we will be acknowledging each child's birthday (provided the child wants this) in a variety of ways depending on the age of the children. This will be initiated by the actions of the teacher not parents.

## Food Intolerances

If your child has food intolerances, in the event of cooking experiences please provide alternative snacks that can be stored or frozen for later use.

## Medical Issues

Please inform staff of any medical conditions and/or allergies so appropriate paperwork can be completed and returned to us promptly.

## Toys

Please do **not** send in toys with your child as they may be lost or broken. Each child will have the opportunity to tell or show news later in the year.



## Health

Good health is vital to your child's progress. It is probable that at some time during your child's school days, he or she will become unwell. Please keep your child home if he/she is unwell.

If your child is absent, please let us know by:

- 1) Logging on to Connect and sending an Absentee note
- 2) Sending a short text message to 0439 695 215 explaining the reason for the absence.
- 3) Sending an email to [wellard.ps@education.wa.edu.au](mailto:wellard.ps@education.wa.edu.au)
- 4) Emailing your class teacher

All children will be screened by a Child Health Nurse during the year, this includes vision, hearing and general development assessments. If you have any concerns or reoccurring health issues, please let us know.

I need to stay home if . . .							
I have a runny nose	I have a fever	I am vomiting	I have a diarrhea	I have a rash	I have head lice	I have an eye infection	I have been to the hospital
							
Discharge is not clear	Temperature of 38° or higher	Within the past 24 hours	Within the past 24 hours	Body rash with itching or fever	Itchy head, with active lice	Redness, itchy, weeping and/ or crusty eyes	Hospital visit or ER visit
I am ready to come back to school when . . .							
Fever free without fever reducing medication	Free from symptoms for at least 24 hours	Free from symptoms for at least 24 hours	Free from symptoms for at least 24 hours	After evaluation from doctor.	After treatment and repeat treatment after one week	After symptoms and discharge cease.	Released by medical provider to return to school

## Lunch



Wellard Primary School is a **ALLERGY AWARE** school. **We will inform you of any allergies in class so you are aware of nuts, dairy or egg products brought to school.** Your child will need to bring a packed lunch every school day. We suggest sandwiches or similar, fruit and a small snack of yoghurt, cheese, vegetable sticks or crackers. Healthy foods are encouraged and therefore if you feel you must provide a packaged treat, please limit this to one item.

Lunches are placed and stored inside the classroom throughout the day. Please place your child's lunch box in the buckets or shelves provided before school. We recommend frozen ice bricks to keep the lunches cool in the warmer months. We encourage plastic free lunches as we are working towards reducing waste and caring for our school environment.

We recommend that you practise opening and closing lunch box containers, water bottles and bags with your child before commencing kindergarten.

In Kindergarten, we DO NOT have crunch and sip.

### Home Languages and Cultures

Wellard Primary School consists of children from a wide range of backgrounds and cultures. The staff value this diversity and would love to hear about any celebrations or traditions that you or your family participate in. If your family speaks a language other than English at home, please continue to speak this language as this is important for your child's identity and development. It is however extremely important that you inform your classroom teacher if you speak another language other than English at home. The teacher can then make sure that they specifically cater for your child's needs, ensuring that they can access the curriculum effectively and therefore experience high success in the classroom.

### Kidspeak

This year Wellard Kindergarten are working together with Kidspeak Paediatric Speech Pathology. They provide assessment and early intervention for children of all ages and abilities. They use child fun, evidence-based therapies that motivate your child to learn. They offer services in line with NDIS, speech assessments, Autism Spectrum Disorder Assessments, Social skills, stuttering and thumb sucking & oral habits. Kidspeak are conveniently located in Success. If you would like to know more information please phone 086383 9918



## School Psychology Service

The School Psychology Service provides preventative and responsive services to assist schools in enhancing student engagement, learning, and wellbeing. At Wellard Primary School, our school psychologist works closely with school staff, parents, students, and external agencies in several areas, including developmental, behavioural, learning, and social/emotional. If you would like to know more about the referral process, please feel free to talk with your classroom teacher.

## Before and after school care – OSH Club

OSH Club is available for before school care from 6:30am - 8:30am and after school care from 3:00 pm – 6:00 pm Monday to Friday.

We supply breakfast and afternoon tea for all children and have great programmed activities to keep all children engaged.

Vacation care is also available from 6:30 am till 6:00 pm during term break.

If you have any questions regarding Osh Club, please call 0458 001 770 or email to [wellard@oshclub.com.au](mailto:wellard@oshclub.com.au) [(junioradventuresgroup.com.au /1300 395 735)] or pop in and speak to the coordinator after 3pm weekdays.

## Wellard P and C Association

### P&C – Our Vision

The Wellard Primary School Parents and Citizens Association aims to improve the academic, social, and emotional outcomes of students. It promotes a collaborative forum for parents to be involved in school matters and to positively contribute ideas that enhance the school community. It provides extra amenities that benefit students. Aims to develop parents' participation and involvement in the school.

The P & C Association is an integral part of Wellard Primary School and supports student endeavours now and into the future. Meetings provide an opportunity for parents and caregivers to discuss relevant issues, events and concerns as well as learn about different programs available to students at our school.

We encourage all parents and community members to come along to our meetings which will be advertised through the school's face book page and through Connect.

The P&C meets twice a term as a committee, we are also very proud of our school canteen which is run and managed by the P&C and our canteen manager.

Over the last 3 years we have raised thousands of dollars. We have been fundraising towards a sustainable garden project, which we have raised over \$40,000, You can see why the P&C is so vitally important, and we need you to help us continue the wonderful work and opportunities we give to our children and community.

A successful P&C wouldn't be possible without the help of volunteers, even 1 hour a week to help in our canteen or as a general P&C member, it is also a fantastic way to meet new friends.

Help us to keep this going, and join our wonderful team, together we will make a difference.

If you have any questions or would like to speak to one of our P&C executive members, do not hesitate to contact us via email to [wellardpandc@gmail.com](mailto:wellardpandc@gmail.com)

Wellard Primary P&C Association

### Toileting Independently

Toilet training is a big step as children they learn to understand their body's signals and start being responsible for their own bodies. Each child is different. While the majority of children enrolling in kindergarten are toilet trained, a number of children of kindergarten age are not developmentally ready. Wellard Primary School promotes the inclusion of all children, including those with health care needs. Most children's toileting needs can be managed by the site practices outlined below.

Upon enrolment to Kindy parents must notify staff of any toileting concerns. If their child is having difficulties toilet training the parent must seek professional advice. Strategies must be implemented at home and every effort must be made to toilet train your child. Teachers may assist families; however, it is not their role nor their area of expertise.

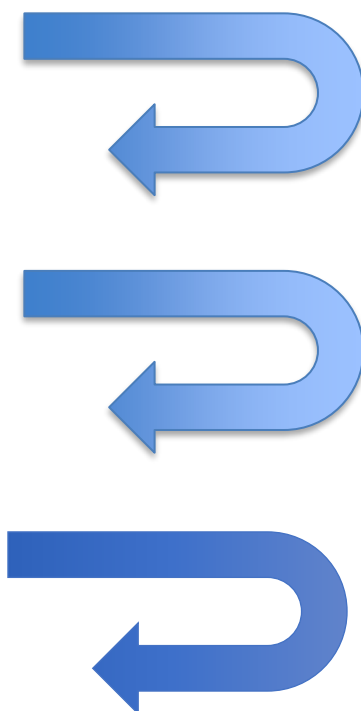
#### **PARENTS MAY BE ASKED TO ASSIST IN CHANGING AND CLEANING THEIR CHILD**

Class reminders to use the toilet with minimal accidents.

Frequent accidents and reminding to go to the toilet. Parents and staff meet to discuss Individual plan implemented at school and home. Parents to seek advice from G.P.

Regular accidents at school and teacher assistance needed. Regular 30 minute reminders for student to go to the toilet. Parents to follow up with program at home and seek advice from G.P, Ngala and Health Nurse.

Review progress after 4 weeks with admin staff and School Psychologist.



## SOME THINGS YOU CAN DO TO HELP YOUR CHILD BEGIN KINDERGARTEN

- Read to your child each day. This is one of the greatest single ways to prepare children for school. Read them stories they enjoy encouraging a love of books and reading.
- Encourage children to take notice and remember things around them.
- Play ball with your child to improve catching, throwing and co-ordination skills.
- Provide opportunities for “writing” and drawing – pencils and blank sheets of paper. Discuss your child’s work with them.
- Provide scissors and old magazines or advertising brochures for cutting.
- Provide paint and paintbrushes for painting and talk about the pictures and the colours.
- Include your child in everyday activities such as shopping, baking and gardening. Talk about these things with your child.
- Talk about colours, patterns, shapes, sizes of things.
- Allow pre-schoolers to sort and count things such as the shopping – sorting into vegetables, cereals and so on; which is longer or shorter, bigger or smaller and so on.
- Count things such as the number of stairs, pieces of potato on the plate, birds on the fence, buttons on a shirt.
- Use words such as more, many, most, half, whole, quarter, less, least.
- Talk about pairs of things and things that go together such as a cup and saucer, knives and forks, pairs of socks – let him/her sort the socks in the washing according to size and colour.
- Listen to and talk to your child.
- Play matching games where objects are matched up according to their colours, shapes, sizes, textures and uses.
- Help your child to understand waiting for their turn, sharing, fitting in with other people, playing with other children, listening without interrupting, following instructions, asking to go to the toilet, knowing their first and last names and their home addresses.
- Make time for your pre-schooler, to listen to them, to encourage them and make school a positive experience.
- Instil that learning is fun.



## LEARNING AT KINDERGARTEN

### Firstly & Most Importantly:

- I learn to be away from my parents
- I learn to work with teachers and other adults
- I learn to work with other children in large and small groups
- I learn to share and co-operate
- I learn rules and routines
- I learn to listen, question and answer
- I learn to be independent and not afraid to ask for help
- I learn to select and choose
- I need to learn all the skills to grow into a happy healthy person

### I need to learn about THE WORLD AROUND ME by:

- Finding out what things are
- Finding out what things are called
- How they work and where they come from?
- What they are made of and who makes them?
- How they feel, taste, smell, look and sound?
- Will they hurt me?
- How do they grow and develop?



### READ - I need to know:



- What a book is? and that it contains pictures and words
- That the words are what I read
- The book has a cover, beginning, end and back
- Reading and writing is done from the top to bottom, left to right and that a printed word represents one spoken word
- How to care and love books in order to want to read?
- Books are enjoyable

Some books provide information (non-fiction) and some are stories (fiction).

### MATHEMATICS I need to know:

- The name of numbers and be able to identify numbers
- Say numbers in the right order
- Match the number with the amount of objects
- Know the names of colours and shapes and be able to match them
- Put things into groups

- Learn that things can be put into order e.g. smallest to largest
- Learn about size - more, less, big, small
- Learn about weight
- Learn about space - in, on, behind, through
- Learn that things are constant e.g. the same amount of water in a small and large jug is still the same amount of water



### WRITING - I need to:

- Know what happens when I put pencils or paint to paper
- Be able to hold a pencil or brush correctly
- Have time to firstly scribble, draw, make and shapes before I can draw things or letters. This may take a long time
- Enjoy painting and drawing to learn to write
- Learn about letters and words (e.g. my name) how they are formed and what order they go in
- I need you to praise and encourage me even if you cannot see what I've created
- I'll need lots of practice, plenty of paper and pens



### PHYSICAL – I need to:

- Hold and snip with scissors with dominant hand
- Thread beads onto a string
- Manipulate Lego, playdough, connector toys
- Walk using heel toe motion
- Jump with two feet
- Balance and walk on beam independently
- Climb up and over frame independently



### PLAY / SOCIAL SKILLS – I need to:

- Enjoy playing with others
- Make friends
- Use imaginary play
- Play games with rules
- Join in and start conversations



### REMEMBER

I will learn at my own rate and this may be faster or slower than others.



## KINDY CHECKLIST

- |  |  |
|--|--|
| <input type="checkbox"/> School uniform                | <input type="checkbox"/> Velcro shoes                      |
| <input type="checkbox"/> Fruit in a separate container | <input type="checkbox"/> Lunch box (not glass)             |
| <input type="checkbox"/> Spare clothing                | <input type="checkbox"/> Water bottle (not glass)          |
| <input type="checkbox"/> Name on all items             | <input type="checkbox"/> Booklist requirements supplied    |
| <input type="checkbox"/> School bag                    | <input type="checkbox"/> Contributions and charges payment |



# WELLARD PRIMARY SCHOOL – KINDY GROUP ATTENDANCE DAYS 2024

	Monday	Tuesday	Wednesday	Thursday	Friday
TERM 1					
1			31 Jan	1 Feb	2 Feb
2	5 Feb	6 Feb	7 Feb	8 Feb	9 Feb
3	12 Feb	13 Feb	14 Feb	15 Feb	16 Feb
4	19 Feb	20 Feb	21 Feb	22 Feb	23 Feb
5	26 Feb	27 Feb	28 Feb	29 Feb	1 Mar
6	LABOUR DAY 4 Mar	5 Mar	6 Mar	7 Mar	8 Mar
7	11 Mar	12 Mar	13 Mar	14 Mar	15 Mar
8	18 Mar	19 Mar	20 Mar	21 Mar	22 Mar
9	25 Mar	26 Mar	27 Mar	28 Mar	GOOD FRIDAY 29 Mar
TERM 2					
1	15 Apr	16 Apr	17 Apr	18 Apr	19 Apr
2	22 Apr	23 Apr	24 Apr	ANZAC DAY 25 Apr	26 Apr
3	29 Apr	30 Apr	1 May	2 May	3 May
4	6 May	7 May	8 May	9 May	10 May
5	13 May	14 May	15 May	16 May	17 May
6	20 May	21 May	22 May	23 May	24 May
7	27 May	28 May	29 May	30 May	SDD
8	WA DAY 3 Jun	4 Jun	5 Jun	6 Jun	7 Jun
9	10 Jun	11 Jun	12 Jun	13 Jun	14 Jun
10	17 Jun	18 Jun	19 Jun	20 Jun	21 Jun
11	24 Jun	25 Jun	26 Jun	27 Jun	28 Jun
TERM 3					
1	15 Jul	16 Jul	17 Jul	18 Jul	19 Jul
2	22 Jul	23 Jul	24 Jul	25 Jul	26 Jul
3	29 Jul	30 Jul	31 Jul	1 Aug	2 Aug
4	5 Aug	6 Aug	7 Aug	8 Aug	9 Aug
5	12 Aug	13 Aug	14 Aug	15 Aug	16 Aug
6	SDD	20 Aug	21 Aug	22 Aug	23 Aug
7	26 Aug	27 Aug	28 Aug	29 Aug	30 Aug
8	2 Sep	3 Sep	4 Sep	5 Sep	6 Sep
9	9 Sep	10 Sep	11 Sep	12 Sep	13 Sep
10	16 Sep	17 Sep	18 Sep	19 Sep	20 Sep
TERM 4					
1	7 Oct	8 Oct	9 Oct	10 Oct	11 Oct
2	14 Oct	15 Oct	16 Oct	17 Oct	18 Oct
3	21 Oct	22 Oct	23 Oct	24 Oct	25 Oct
4	28 Oct	29 Oct	30 Oct	31 Oct	1 Nov
5	4 Nov	5 Nov	6 Nov	7 Nov	8 Nov
6	11 Nov	12 Nov	13 Nov	14 Nov	15 Nov
7	18 Nov	19 Nov	20 Nov	21 Nov	SDD
8	25 Nov	26 Nov	27 Nov	28 Nov	29 Nov
9	2 Dec	3 Dec	4 Dec	5 Dec	6 Dec
10	9 Dec	10 Dec	11 Dec	12 Dec	SDD
Public Holidays		Group A,C & E		Group B,D & F	
SDD/ School Development Days - Students do not attend on these days					

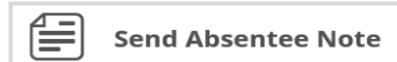


## Absent from school?



**Keep your child's attendance records up to date - use one of the following absence notification**

**Connect:** Logon and click Send Absentee Note



**Text message:** 0439 695 215 (Include students name, date of absence and brief reason for absence.)

**Email:** Wellard.ps@education.wa.edu.au

### **Need to pick up your child early:**

Please notify the class teacher with as much notice as possible AND allow yourself sufficient time to collect via Administration

## Payment Information



**Cash** payment can be made directly to the administration office.

**Direct Deposit payments** (Please include child's name and surname in reference.)

**Acc name:** Wellard Primary School

**BSB:** 066 040

**Acc #:** 19901412



**Qkr app** – download from Google Play and setup for safe secure payments



Website: [www.WellardPS.wa.edu.au](http://www.WellardPS.wa.edu.au)

Email: [wellard.ps@education.wa.edu.au](mailto:wellard.ps@education.wa.edu.au)

Contact: 08 9553 0600

Address: 25 Breccia Parade, Wellard, WA, 6170

***"Every Student Matters, Every Moment Counts"***